

In case something happens

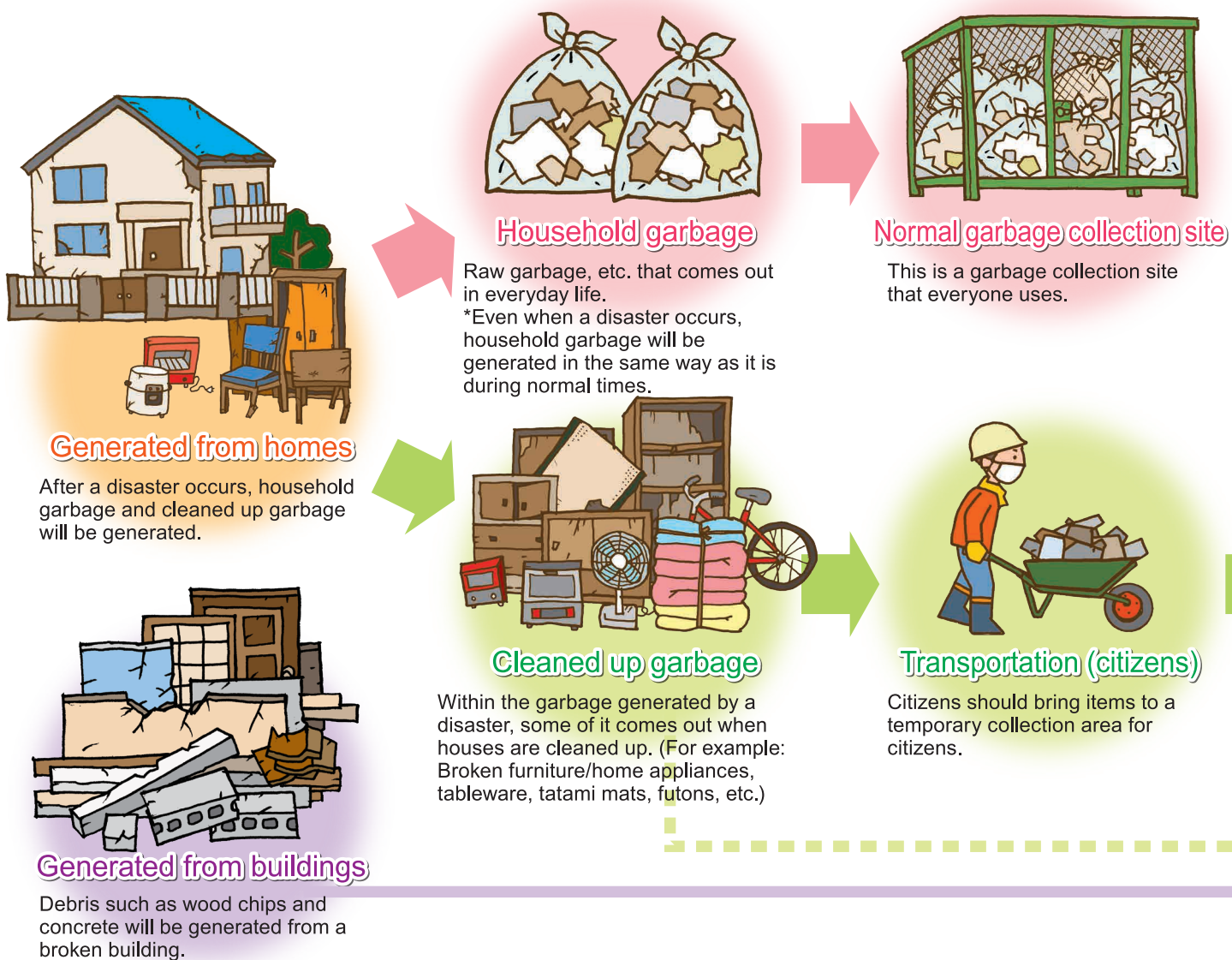
# Disaster Garbage Disposal Handbook



- The purpose is to let citizens know how to dispose of garbage in the event of a large-scale disaster in Yokkaichi City and how to prepare for it on a daily basis.
- This handbook is designed for large-scale disasters such as the Nankai Trough Earthquake, which is predicted to occur.



# If a disaster occurs, how should we dispose of disaster garbage from homes?



## Don't put garbage out on the road!

This obstructs the passage of emergency vehicles such as ambulances and fire trucks. Please keep garbage on the premises until the city informs you about collection.



Disaster garbage generated on the side of roads and next to houses during heavy rains in July 2018

Source: Disaster Waste Countermeasure Photo Channel



## What is a normal garbage collection site?

Normal garbage collection sites are collection sites that everyone uses to put out garbage.

It is used as a place to dispose of household garbage when a large-scale disaster has occurred.

Since we give priority to collecting raw garbage, do not put out cleaned up garbage.

## What is a temporary collection place for citizens?

This is a place to temporarily collect broken furniture and home appliances that came out of cleaning a house where you live. Depending on the scale and the extent of the disaster, it will be set up in public facilities such as local parks.

You cannot put out household garbage such as perishable food garbage.



### Temporary collection place for citizens

This is a place to temporarily collect cleaned up garbage. It will be set up temporarily according to the damage situation.



### Transportation (city)

The city will bring these items from a temporary collection area for citizens to primary temporary storage.



### Primary temporary storage

This is a place to sort and dispose of cleaned up garbage. It will be set up temporarily according to the damage situation.

Debris generated from buildings, etc. will be removed by the city and businesses, and transported to a primary temporary storage site.

## Separation is necessary during a disaster.

If garbage is not sorted...

- It takes time to process the garbage and it will hinder early recovery and reconstruction from a disaster.
- This leads to delays in the collection of perishable items such as raw garbage, and this will generate foul odors and pests.
- Dangerous materials such as gas cylinders may get mixed in, and there is a risk of fire or an accident.



Don't put these items out together



# Guidance on a normal garbage collection site

- This is a garbage collection site that everyone usually uses to put out garbage.
- This will be used as a place to dispose of household garbage (combustible garbage/crushable garbage/recyclables), even during a disaster.
- We preferentially collect “combustible garbage” such as perishable raw garbage.
- Please keep crushable garbage/recyclables in your house



# When cleaning up disaster garbage

- Let's be careful when cleaning this up.
- If there is an aftershock, stop working and evacuate to a safe place.
- Since houses may collapse or have other damage occur during cleanup, let's work with multiple people who are talking to each other.



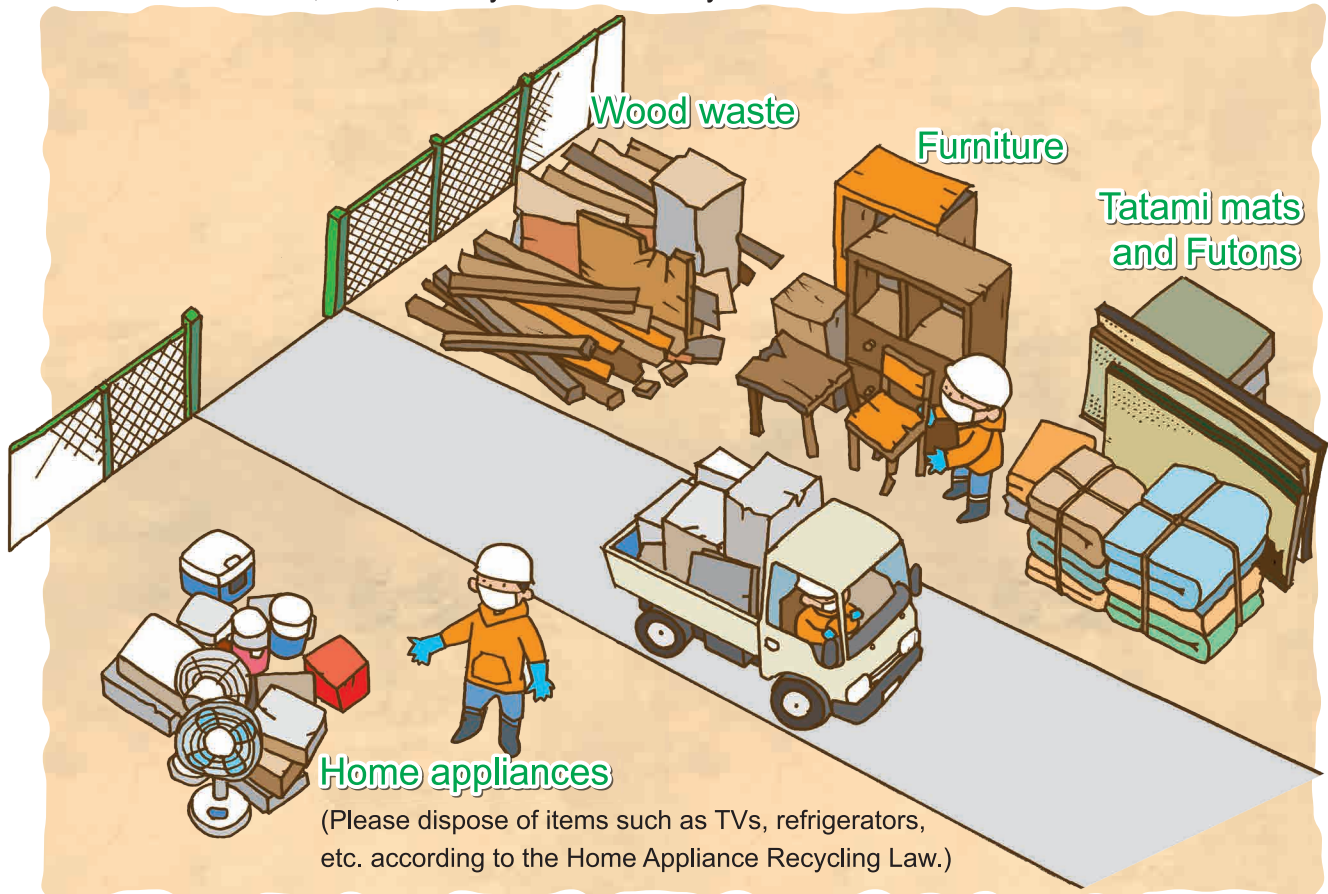
It is safe to keep these items on a daily basis along with items such as emergency food.



# Guidance on a temporary collection place for citizens

- Depending on the scale and the extent of the disaster, “temporary collection places for citizens” will be set up in public facilities such as local parks.
- A “temporary collection place for citizens” is a temporary collection place to get rid of furniture, home appliances, etc. that were damaged by the disaster.
- Please check the notice from the city for the installation information of a “temporary collection place for citizens” and how to sort and put out garbage there.

\*Information from the city will be posted in places such as public hall bulletin boards, public relations vehicles, radio, the city website and city SNS.



Your cooperation is needed with sorting according to the instructions in the temporary collection area for citizens.

## You cannot bring in anything like this.



Raw garbage, etc.



Dangerous goods such as gas cylinders



Medical garbage, etc

# About household garbage

- Household garbage is garbage generated from daily life, and refers to “combustible garbage”, “crushable garbage” and “recyclables.”
- Places to put out household garbage are “normal garbage collection sites” that you usually use to take out garbage.
- The city aims to collect garbage from the fourth day after a disaster. **Please keep garbage in your house for 3 days after a disaster.** When city collection resumes, please put out “combustible garbage” such as raw garbage.
- Notification of the start of collection will be done in places such as public hall bulletin boards, public relations vehicles, radio, the city website and city SNS.



Priority is given to combustible garbage such as raw garbage



Please keep crushable garbage/recyclables in your house



# About cleaning up

- For cleaned up garbage, within the garbage generated by a disaster, some of it comes out when houses are cleaned up. (For example: Broken furniture/home appliances, tableware, tatami mats, futons, etc.)
- The place to put out garbage is a “temporary collection place for citizens.”
- If you put out garbage at a “normal garbage collection site”, the collection of garbage such as raw garbage will be hindered and the sanitary environment in the area will deteriorate.
- Please check the notice from the city for the installation information of a “temporary collection place for citizens” and how to sort and put out garbage there.

Do not leave these items in a normal garbage collection area.



Broken tableware, etc.



Broken home appliances, etc.



Broken furniture, etc.



Tatami mats and Futons, etc.



# Assumed schedule during a disaster

Estimated time	Initial action period (Within 24 hours)	Disaster occurrence initial period (Until about 3 days)	Emergency period (Until about 14 days)	Recovery period
Household garbage	Citizens Garbage is stored in the house	Do not put out in principle	Put out at a normal garbage collection site	
	Administration Confirmation of the damage status of collection vehicles and processing facilities	Do not collect in principle	Household garbage collection	Normal collection system
Cleaned up garbage	Citizens Garbage is stored in the house	<ul style="list-style-type: none"> <li>Area where a temporary collection place for citizens was set up →Transport to a temporary collection place for citizens</li> <li>Area where a temporary collection place for citizens was not set up →Transport to a normal garbage collection site</li> </ul>	As usual	
	Administration Confirmation of the damage status of collection vehicles and processing facilities	<ul style="list-style-type: none"> <li>Collection of cleaned up garbage</li> <li>Set up a temporary collection place for citizens as needed</li> <li>Set up primary temporary storage as needed</li> </ul>	Carry out temporary collection in addition to the normal collection system	

## Request from the city



- Thank you for your cooperation in separating disaster garbage.
  - ➡ Prompt garbage disposal leads to early recovery and reconstruction.
- Please keep garbage in your house for 3 days after a disaster.
- During a large-scale disaster, individuals will be temporarily prohibited from bringing garbage to a Clean Center.
  - ➡ Prioritize the restoration of waste treatment facilities and the treatment of large amounts of disaster garbage.

Thank you for your understanding.
- Temporary collection places for citizens will be set up within your living area. Thank you for your cooperation with installation and operation of these places.
- Garbage that is not related to disasters (piggyback garbage) interferes with the disposal of disaster garbage. Never put out piggyback garbage.



# What should I do in such a case?



**Q** What would start if a disaster occurs in the first place?

**A** First, your own life and that of your family comes first! It is important to evacuate to a safe place. Let's start cleaning up after confirming the safety of the surroundings.



**Q** What should we do with toilet garbage?



**A** Toilets may become unusable when a disaster occurs. Prepare a portable toilet in advance. Separate items such as portable toilets into "combustible garbage" and put them out at a normal garbage collection site.



**Q** How does city hall provide information when a disaster occurs?

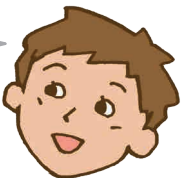
**A** We'll tell you this in places such as the Yokkaichi City website, disaster prevention emails and on the radio. Information can also be found at places like district civic centers, shelters and public halls. As a note of caution, social media is convenient, but there are cases where it has incorrect information. Please check the information provided by the city frequently.



**Q** When I take out garbage, is that the only thing I should know?



**A** Please cooperate and sort items as usual. When you put items out, place priority on raw garbage. Make sure to protect the place where you put the garbage out. If you put it out on a place like a road, emergency vehicles such as ambulances and fire trucks will not be able to pass. Please stop doing this.



**Q** Is there anything that we can do on a regular basis?

**A** If you fix furniture and home appliances to a wall, you can prevent damage in case of an emergency, and this will help you protect yourself. It is also important to dispose of unneeded items in your house.

